

Room Selection Floor Plans

The following floor plans show rooms that will be available during Room Selection. Some rooms are unavailable and are marked with an X. Please note that availability is subject to change.

Before attending Room Selection, please take a few moments to review the floor plans. You should have several different locations in mind in case your first and second preferences are not available.

If, during Room Selection, you are unable to decide on a room, you will be asked to step aside so that the process can keep moving for others.

Thank you!

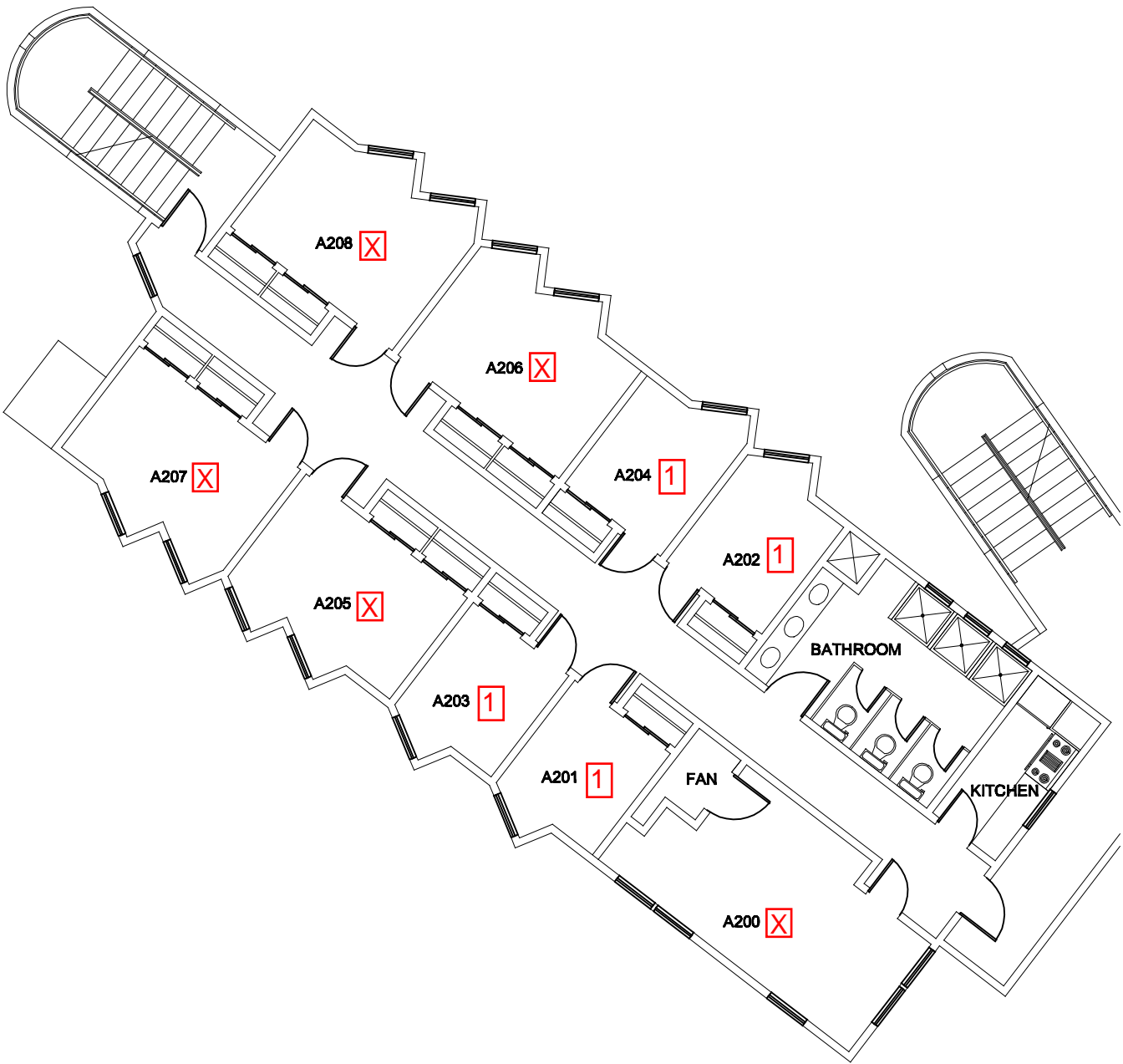
South Hall



Room Legend
 All Rooms Single Unless Otherwise Noted.
 X = Unavailable
 4 = Quad (4-person room)
 2 = Double (2-person room)

NH A2 - Men

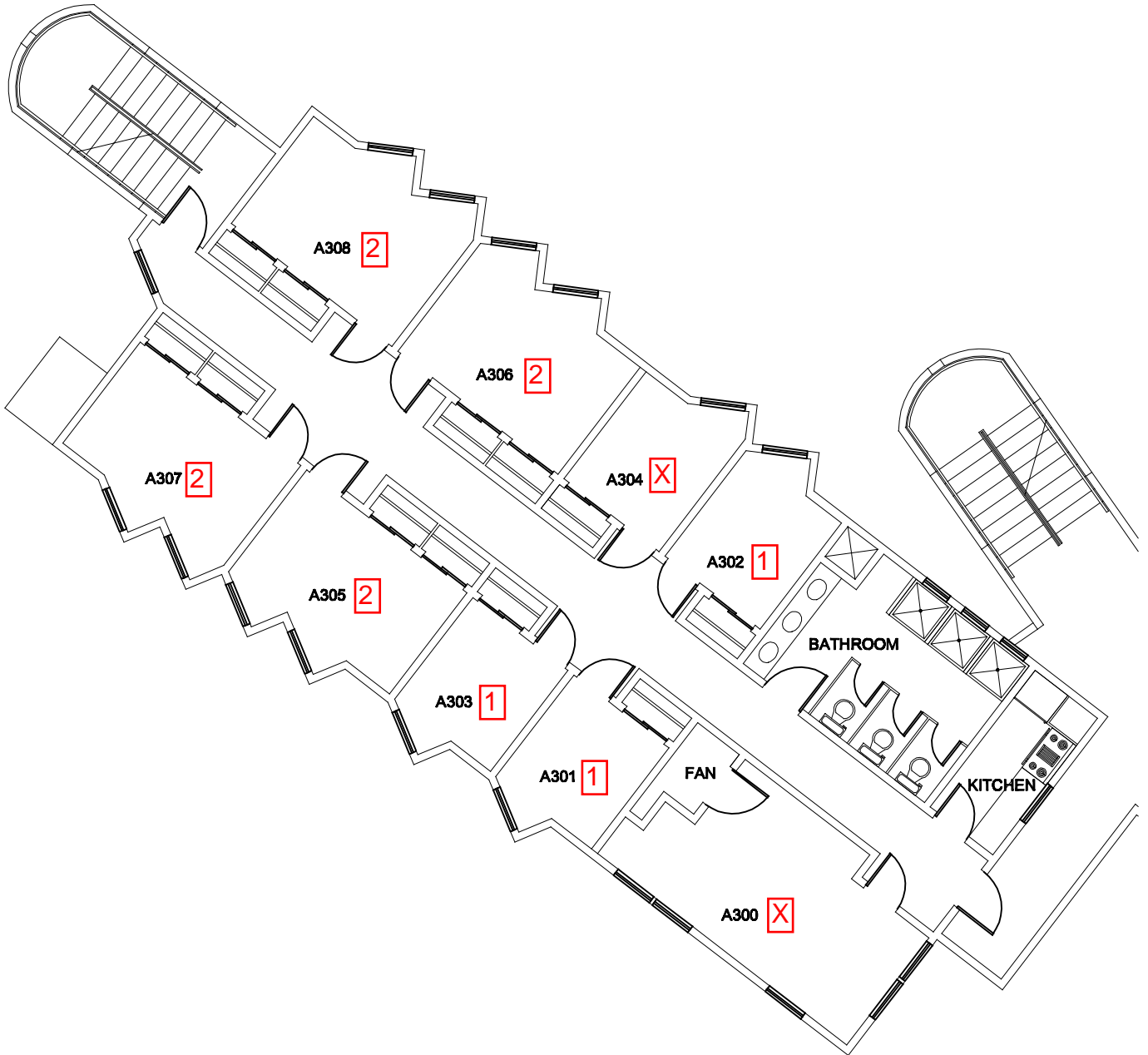
Room Legend
X = Unavailable
4 = Quad (4-person room)
3 = Triple (3-person room)
2 = Double (2-person room)
1 = Single (1-person room)



NH A3 - Women

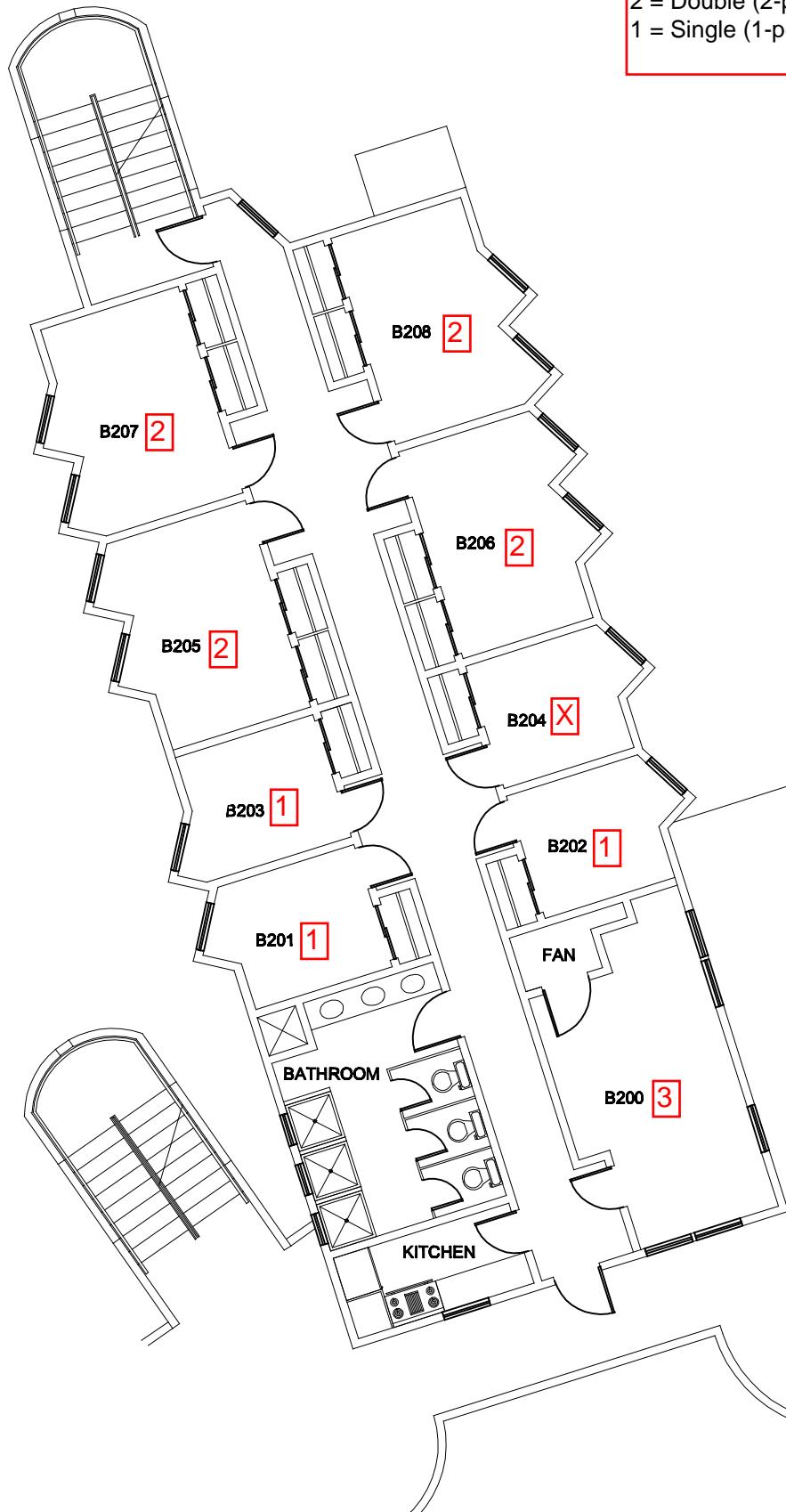
Room Legend

- X = Unavailable
- 4 = Quad (4-person room)
- 3 = Triple (3-person room)
- 2 = Double (2-person room)
- 1 = Single (1-person room)



NH B2 - Women
Quiet Study Wing

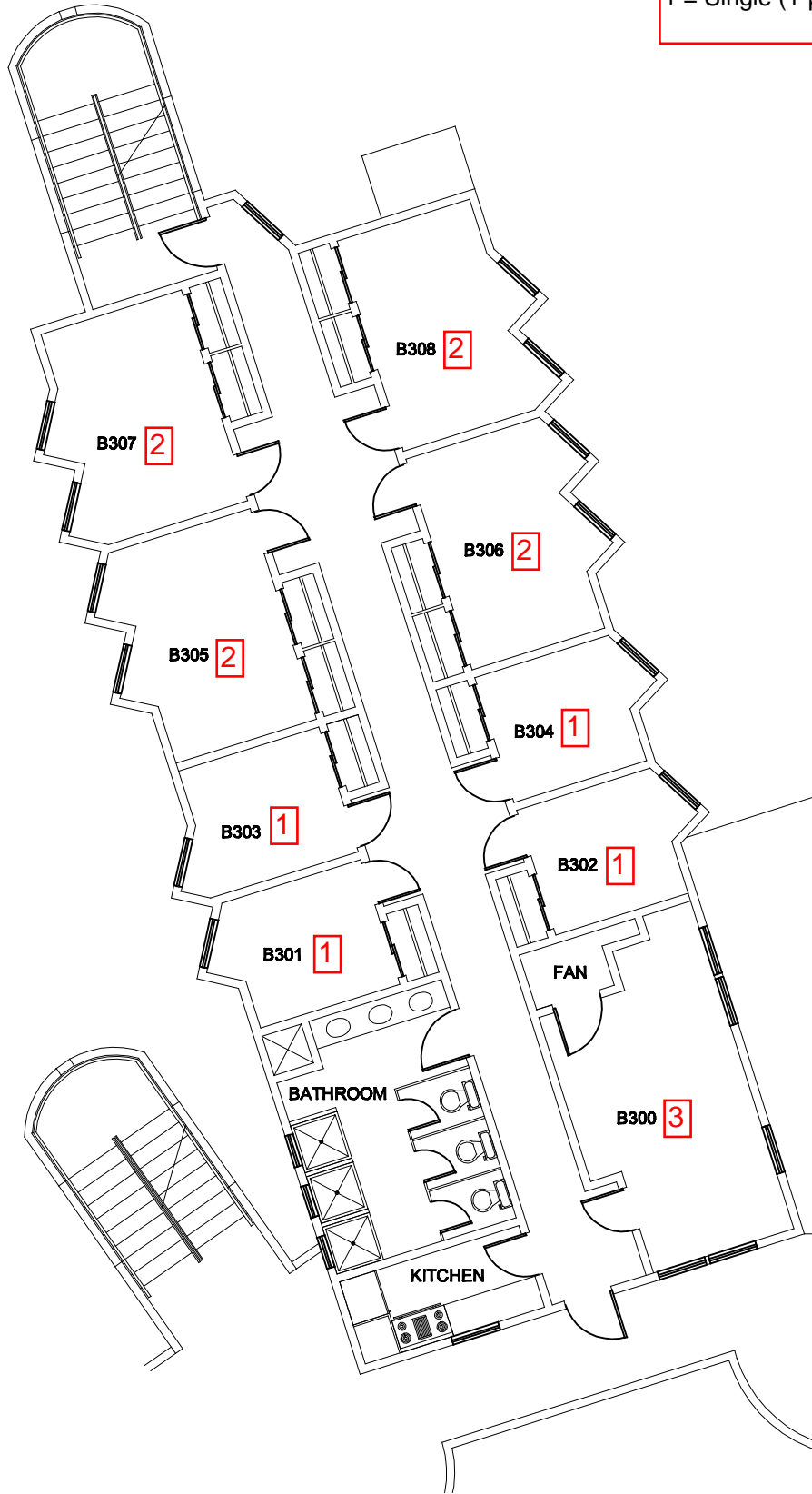
Room Legend
X = Unavailable
4 = Quad (4-person room)
3 = Triple (3-person room)
2 = Double (2-person room)
1 = Single (1-person room)



NH B3 - Men
Quiet Study Wing

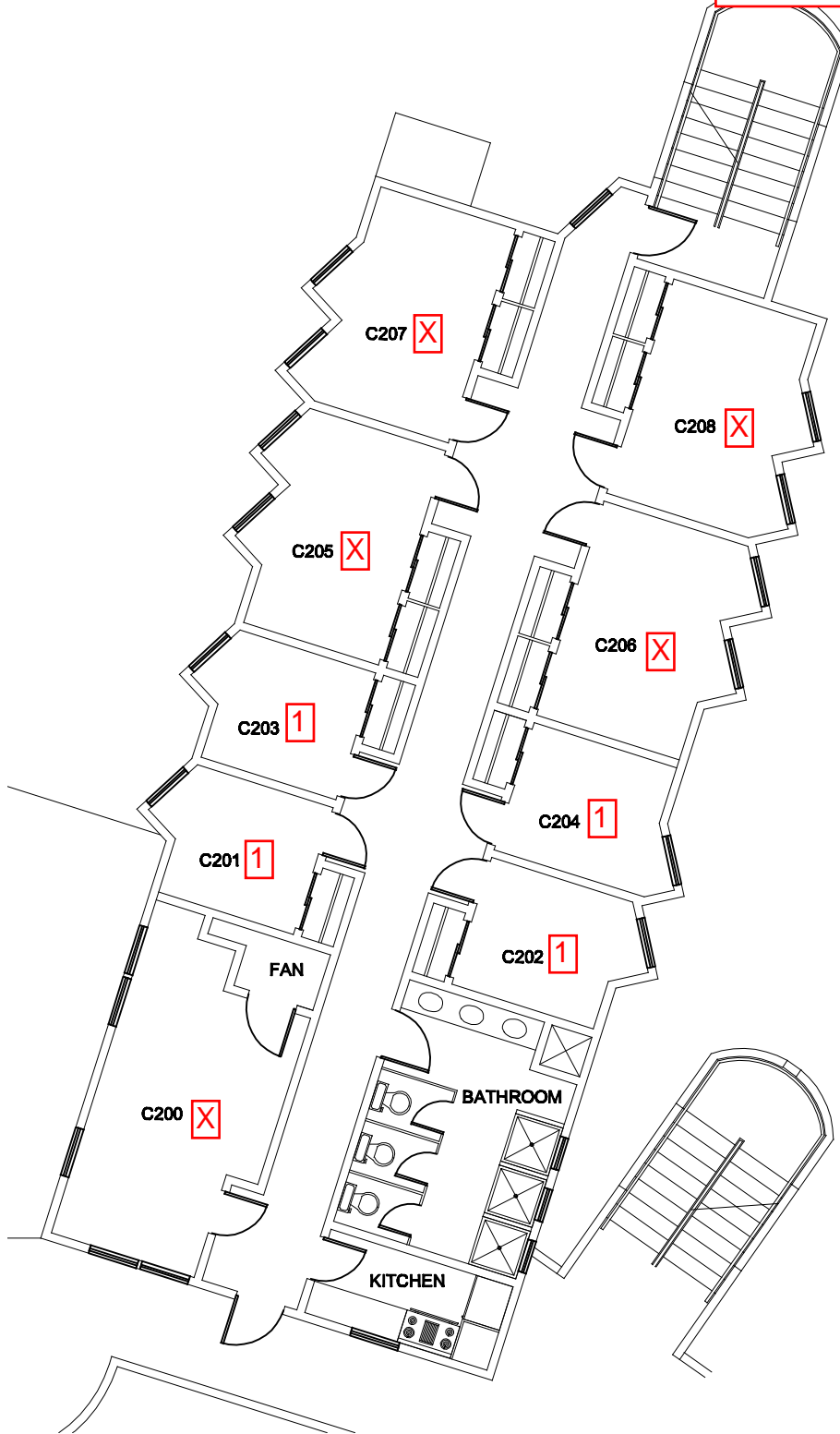
Room Legend

- X = Unavailable
- 4 = Quad (4-person room)
- 3 = Triple (3-person room)
- 2 = Double (2-person room)
- 1 = Single (1-person room)



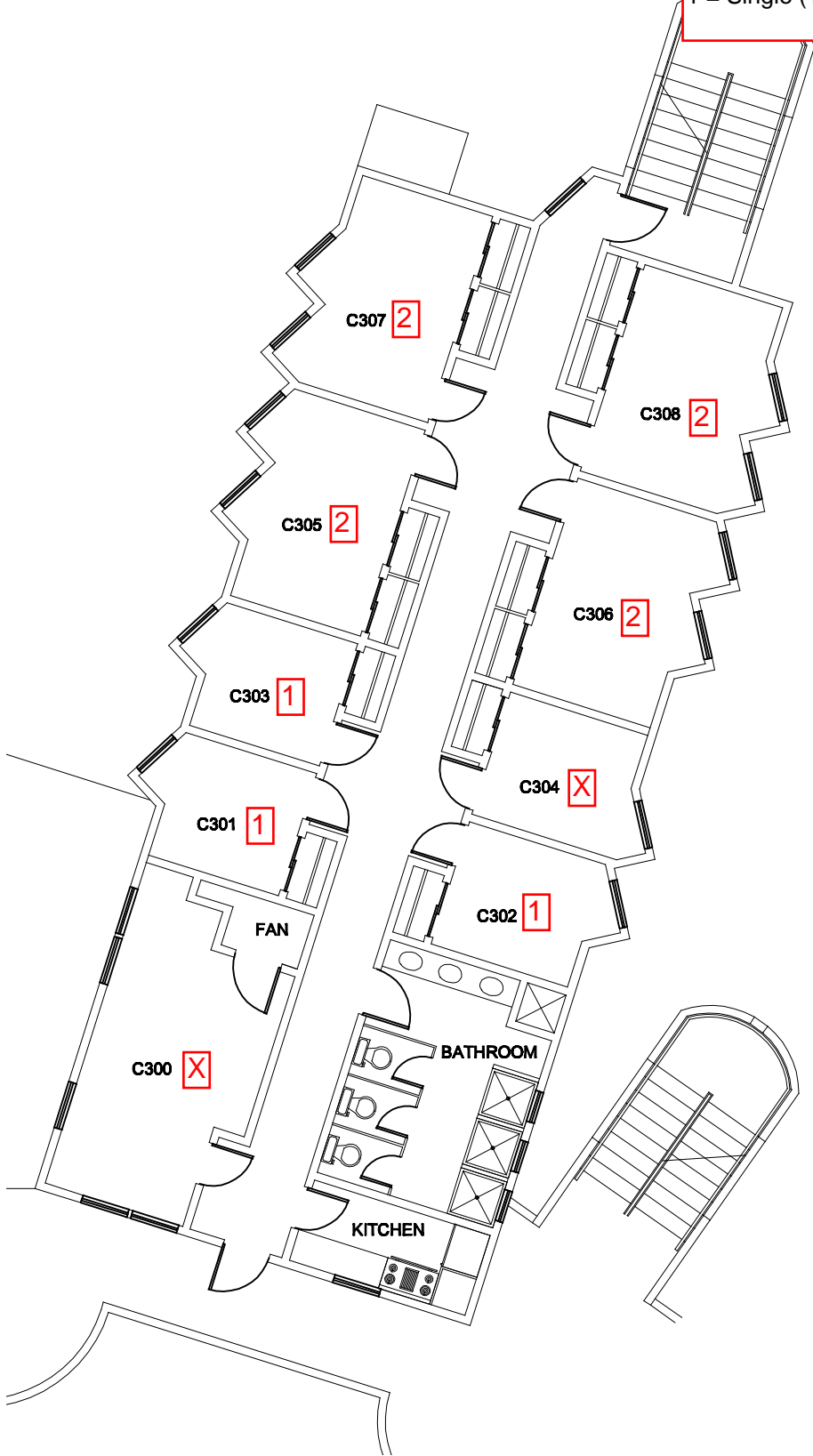
NH C2 - Men

Room Legend
X = Unavailable
4 = Quad (4-person room)
3 = Triple (3-person room)
2 = Double (2-person room)
1 = Single (1-person room)



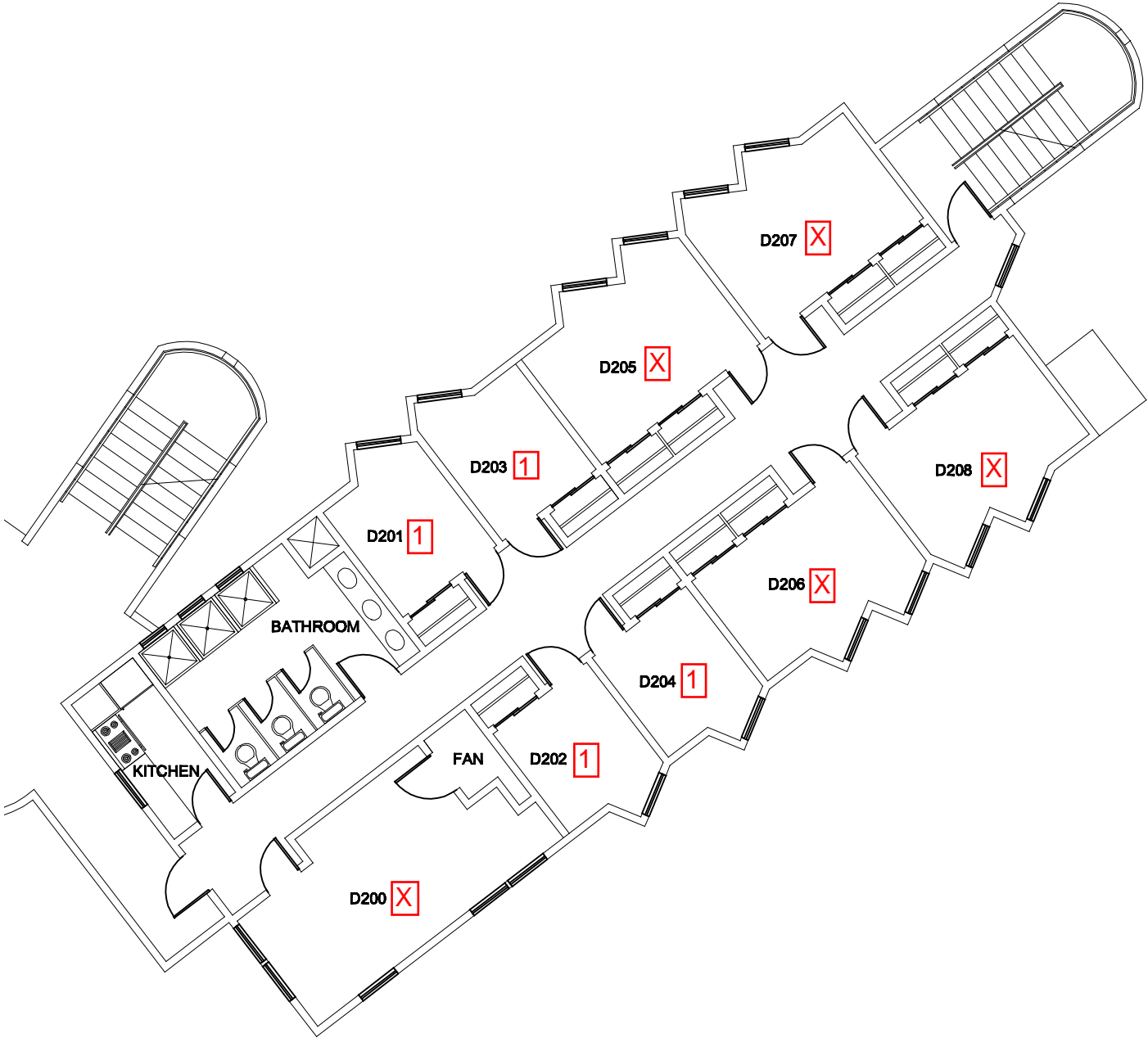
NH C3 - Men

Room Legend
X = Unavailable
4 = Quad (4-person room)
3 = Triple (3-person room)
2 = Double (2-person room)
1 = Single (1-person room)



NH D2 - Women

Room Legend
X = Unavailable
4 = Quad (4-person room)
3 = Triple (3-person room)
2 = Double (2-person room)
1 = Single (1-person room)



NH D3 - Women

Room Legend
X = Unavailable
4 = Quad (4-person room)
3 = Triple (3-person room)
2 = Double (2-person room)
1 = Single (1-person room)

